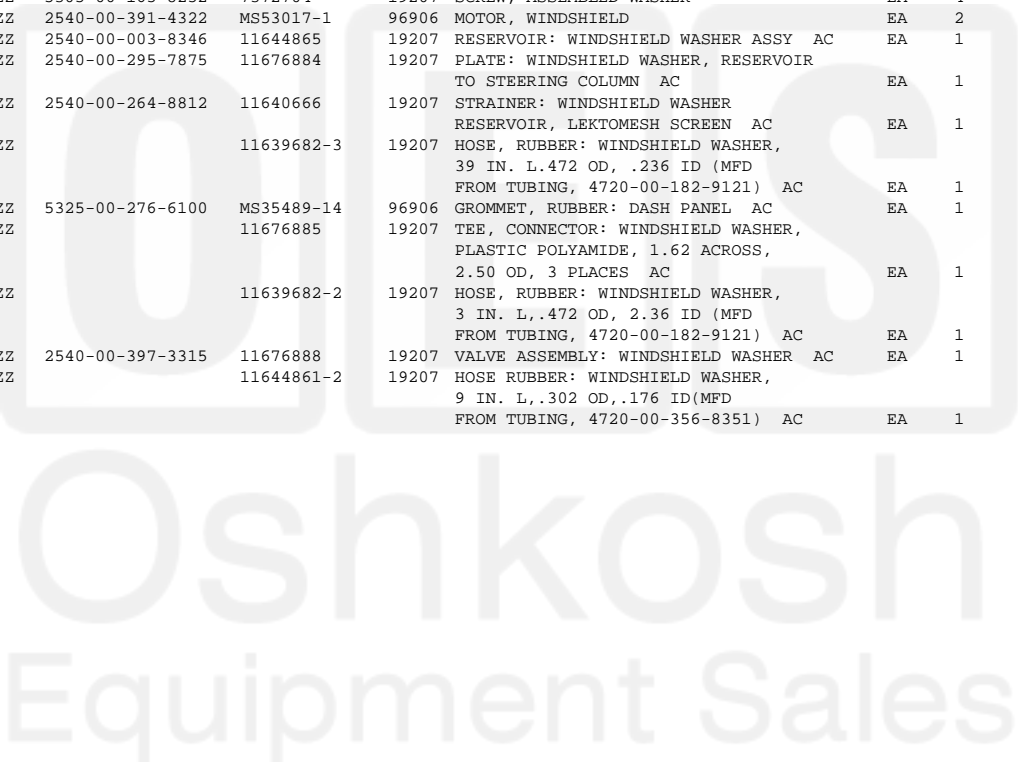


Current part is item (3) on diagram. Available at www.oshkoshequipment.com

(1) (a) FIG. NO.	(2) (b) ITEM NO.	(3) SMR CODE	(4) NATIONAL STOCK NUMBER	(5) PART NUMBER	(6) FSCM DESCRIPTION USABLE ON CODE	(7) U/M	(8) INC IN UNIT
2202-ACCESSORY ITEMS							
320	1	PAOZZ	5310-00-705-8965	7058965	19207 NUT, PLAIN, CAP: CLAMPING, WIND-SHIELD WIPER ARM TO MINOR	EA	2
320	2	PAOZZ	2540-00-050-0810	MS53049-1	96906 ARM, WINDSHIELD WIPER: ADJ, 7-1/2 CLOSED, 12 EXTENDED	EA	2
320	3	PAOZZ	2540-00-255-9212	MS53048-10	96906 BLADE, WINDSHIELD WIPER: 10 IN LG	EA	2
320	4	PAOZZ	5305-00-855-0957	MS24629-46	96906 SCREW, TAPPING, THREAD FORMING	EA	4
320	5	PAOZZ	5340-00-984-8540	MS21333-102	96906 CLAMP, ELECTRICAL	EA	1
320	6	PAOZZ	5340-00-057-2890	MS21333-3	96906 CLAMP, LOOP	EA	3
320	7	PAOZZ	4730-00-727-9627	7279627	19207 CLAMP, HOSE: WINDSHIELD WIPER HOSE CONNECTIONS	EA	8
320	8	MOOZZ		7331422	19207 HOSE, RUBBER: WINDSHIELD WIPER (1 PIECE 15-1/2 IN. LG, 1 PIECE 7 IN. LG. 1 PIECE 2 IN. 1 PIECE 34 IN. LG) (58-1/2 IN. REQUIRED TOTAL)		
320	9	PAOZZ	4730-00-737-2701	7372701	19207 MFD FROM HOSE, 4720-00-203-2668	EA	1
320	10	MOOZZ		8689206	19207 TEE, HOSE: WINDSHIELD WIPER MOTOR LINE	EA	1
320	11	PAOZZ	5305-00-165-8252	7372704	19207 TUBE, COPPER: SEAMLESS, COLD-DRAWN SOFT ANLD, 1/4 OD, 0.035 WALL THK, 17-1/2 IN LG. (MFD FROM TUBE, 4710-00-277-5525)	EA	1
320	12	PAOZZ	2540-00-391-4322	MS53017-1	96906 SCREW, ASSEMBLED WASHER	EA	4
321	1	PAOZZ	2540-00-003-8346	11644865	96906 MOTOR, WINDSHIELD	EA	2
321	2	XBOZZ	2540-00-295-7875	11676884	19207 RESERVOIR: WINDSHIELD WASHER ASSY AC	EA	1
321	3	PAOZZ	2540-00-264-8812	11640666	19207 PLATE: WINDSHIELD WASHER, RESERVOIR TO STEERING COLUMN AC	EA	1
321	4	MOOZZ		11639682-3	19207 STRAINER: WINDSHIELD WASHER RESERVOIR, LEKTOMESH SCREEN AC	EA	1
321	5	PAOZZ	5325-00-276-6100	MS35489-14	96906 HOSE, RUBBER: WINDSHIELD WASHER, 39 IN. L. 472 OD, .236 ID (MFD FROM TUBING, 4720-00-182-9121) AC	EA	1
321	6	PAOZZ		11676885	19207 GROMMET, RUBBER: DASH PANEL AC	EA	1
321	7	MOOZZ		11639682-2	19207 TEE, CONNECTOR: WINDSHIELD WASHER, PLASTIC POLYAMIDE, 1.62 ACROSS, 2.50 OD, 3 PLACES AC	EA	1
321	8	PAOZZ	2540-00-397-3315	11676888	19207 HOSE, RUBBER: WINDSHIELD WASHER, 3 IN. L., 472 OD, 2.36 ID (MFD FROM TUBING, 4720-00-182-9121) AC	EA	1
321	9	MOOZZ		11644861-2	19207 VALVE ASSEMBLY: WINDSHIELD WASHER AC	EA	1
					19207 HOSE RUBBER: WINDSHIELD WASHER, 9 IN. L., .302 OD, .176 ID (MFD FROM TUBING, 4720-00-356-8351) AC	EA	1



Current part is item (3) on diagram. Available at www.oshkoshequipment.com

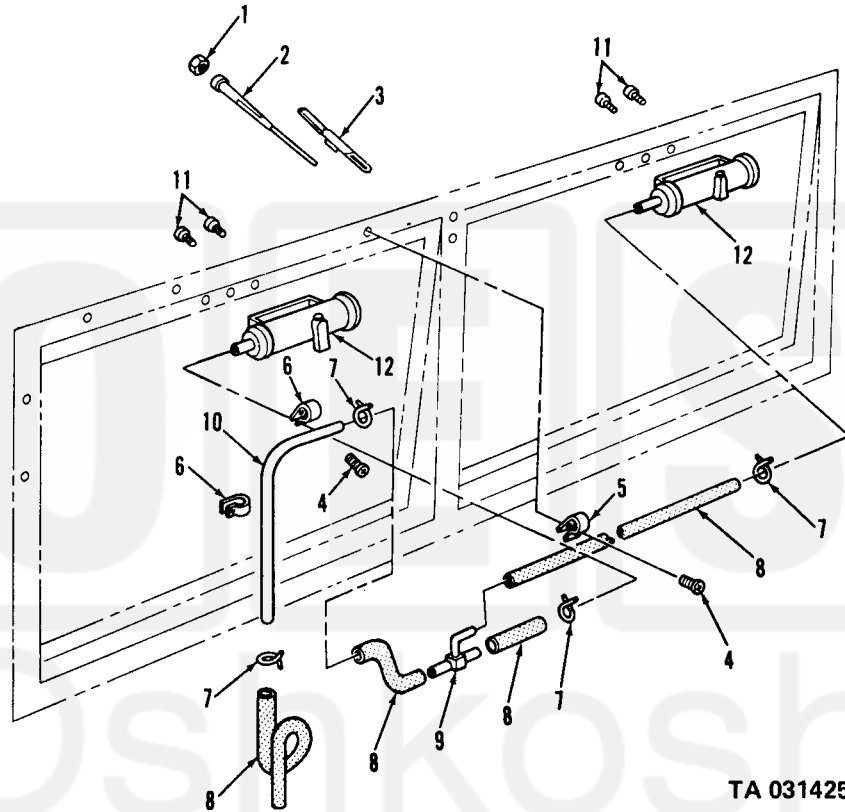


Figure 320. Windshield wipers, motors.